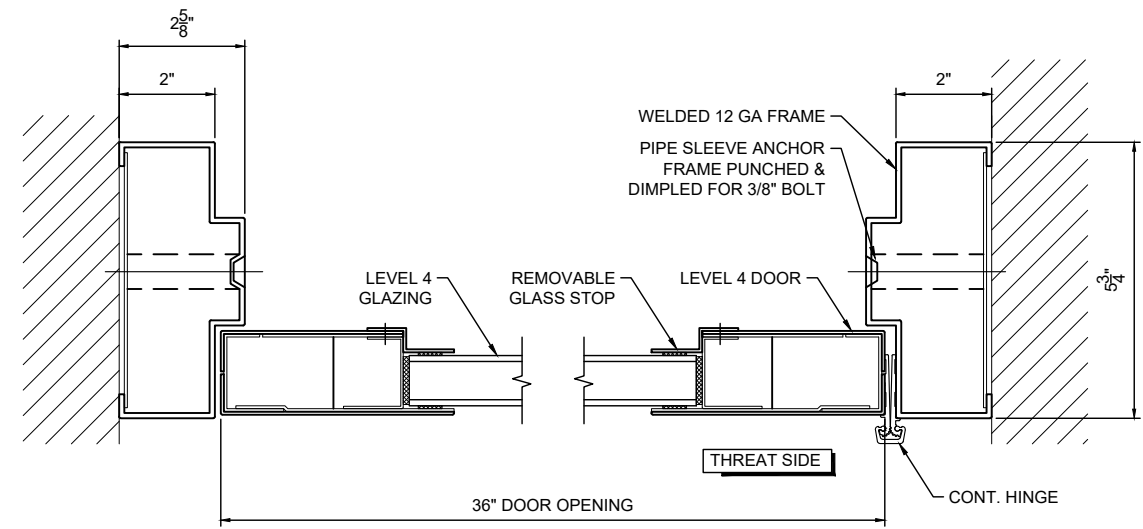


1 SINGLE DOOR ELEVATION
SCALE: 1/2" = 1'-0"



A SECTION A-A
SCALE: 3" = 1'-0"

- NOTES:**
1. BALLISTIC LEVEL: 4.
 2. HEIGHT FROM F.F. TO CENTERLINE OF STRIKE TO BE CONFIRMED.
 3. FRAME MADE FROM 12 GA. PRIME PAINTED STEEL.
 4. DOOR SWINGS TO BE CONFIRMED.
 5. RECOMMENDED ROUGH OPENING 40 1/2" X 86 1/2".
 6. REINFORCEMENT FOR CLOSER INCLUDED.
 7. LEVEL 4 SP412 GLAZING 1.22" THICK.
 8. SUPPLIED HARDWARE FOR DOOR: (1ea.) ABH 110HD ALUM. CONTINUOUS HINGE DOOR STOP SILENCERS

SHEET NUMBER:
1 of 1
JOB NUMBER:

HOLLOW METAL DOOR SYSTEM
ELEVATION & SECTION
SALES DRAWING

REVISIONS:	DESCRIPTION
NO. DATE	

SCALE:	AS INDICATED
DRAWN BY:	
DATE:	

INSULGARD
SECURITY PRODUCTS
1291 RICKETT ROAD BRIGHTON, MI 48116
PHONE (810) 844 - 0776 FAX (810) 844 - 0920

DISCLAIMER: THE INFORMATION CONTAINED IN THIS DRAWING IS CONFIDENTIAL. IT IS THE EXCLUSIVE PROPERTY OF "INSULGARD". AUTHORIZED USE MUST BE APPROVED BY "INSULGARD". ANY UNAUTHORIZED REPRODUCTION AND/OR DISTRIBUTION IS PROHIBITED.