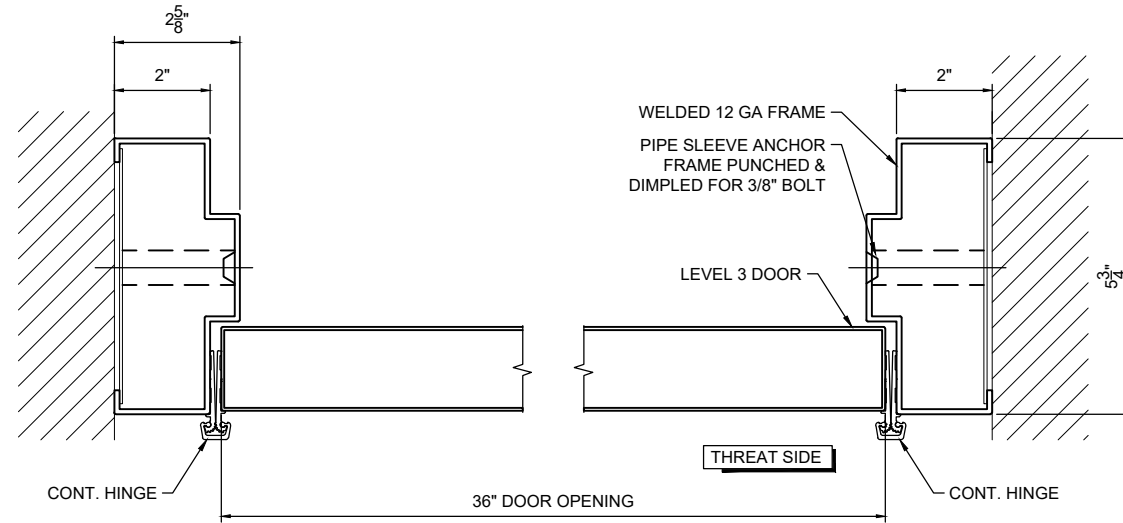


1 DOUBLE DOOR ELEVATION
SCALE: 1/2" = 1'-0"

NOTES:

1. BALLISTIC LEVEL: 3.
2. HEIGHT FROM F.F. TO CENTERLINE OF STRIKE TO BE CONFIRMED.
3. FRAME MADE FROM 12 GA. PRIME PAINTED STEEL.
4. REINFORCEMENT FOR CLOSER INCLUDED.



A SECTION A-A
SCALE: 3" = 1'-0"

SHEET NUMBER:
1 of 1
JOB NUMBER:

HOLLOW METAL DOUBLE DOOR
ELEVATION & SECTION
SALES DRAWING

REVISIONS:	DESCRIPTION
No. DATE	

SCALE:	AS INDICATED
DRAWN BY:	
DATE:	

INSULGARD
SECURITY PRODUCTS

1291 RICKETT ROAD
PHONE (810) 844 - 0776

BRIGHTON, MI 48116
FAX (810) 844 - 0920

DISCLAIMER: THE INFORMATION CONTAINED IN THIS DRAWING IS CONFIDENTIAL. IT IS THE EXCLUSIVE PROPERTY OF "INSULGARD". AUTHORIZED USE MUST BE APPROVED BY "INSULGARD". ANY UNAUTHORIZED REPRODUCTION AND/OR DISTRIBUTION IS PROHIBITED.